

# Designing for users with dyslexia



## Do...

use images and diagrams to support text



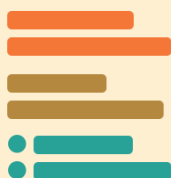
align text to the left and keep a consistent layout



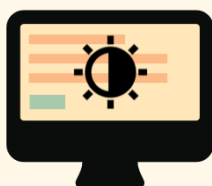
consider producing materials in other formats (for example, audio or video)



keep content short, clear and simple



let users change the contrast between background and text



## Don't...

use large blocks of heavy text



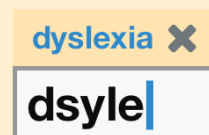
underline words, use italics or write in capitals

*DON'T*  
*DO THIS*

force users to remember things from previous pages - give reminders and prompts



rely on accurate spelling - use autocorrect or provide suggestions



put too much information in one place

